



# FISH PASSAGE CENTER

2501 SW First Avenue, Suite 230, Portland, OR 97201-4752

Phone: (503) 230-4099 Fax: (503) 230-7559

<http://www.fpc.org>

e-mail us at [fpcstaff@fpc.org](mailto:fpcstaff@fpc.org)

## MEMORANDUM

TO: Michele DeHart  
 FROM: David Benner  
 DATE: July 7, 2004  
 RE: 1975-2003 Brownlee Drafts

In response to your request, I have reviewed both July and August drafts at Brownlee Reservoir from 1975 to 2003. The following figures illustrate these drafts.

July Draft at Brownlee 1975-2003

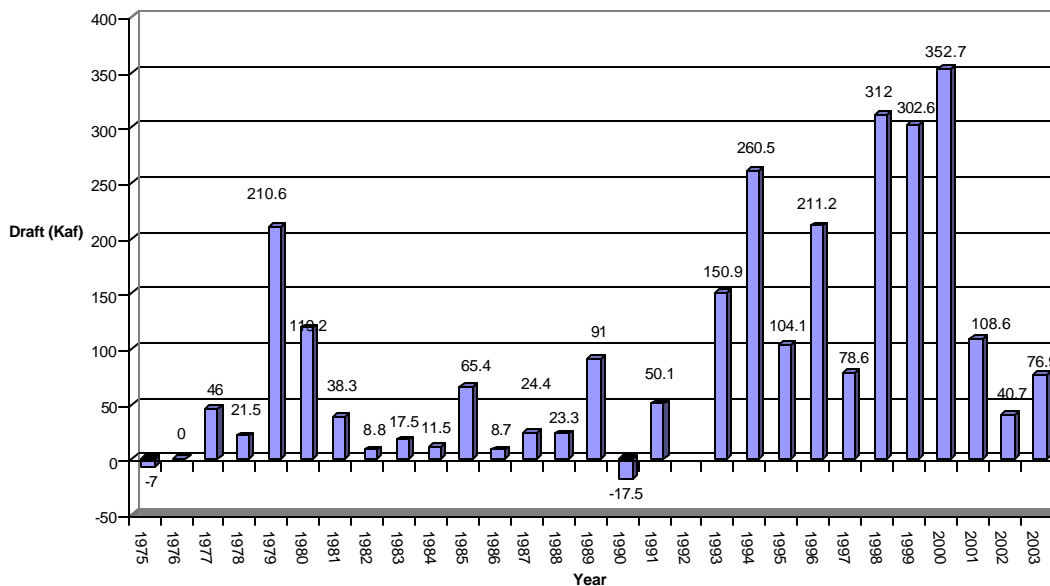


Figure 1. July drafts at Brownlee from 1975 to 2003. Note: 1) July 1992 was missing and 2) July 1<sup>st</sup> 1985 was missing, so calculated draft was from July 2<sup>nd</sup> to July 31<sup>st</sup>.

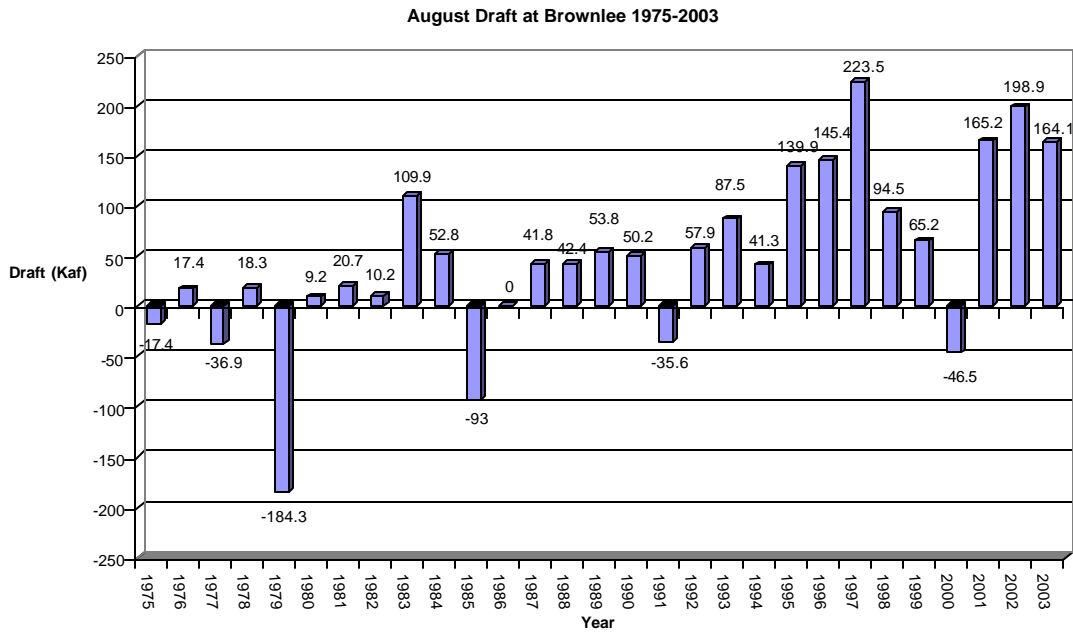


Figure 2. August drafts at Brownlee from 1975 to 2003. Note: August 1<sup>st</sup> 1975 was missing, so calculated draft was from August 2<sup>nd</sup> to August 31<sup>st</sup>.